

City of Fortuna

Municipal Service Review



December 2007

Prepared by:



For the City Sphere of Influence Report

TABLE OF CONTENTS

	<u>Page</u>
Local Agency Formation Commission Authority.....	1
Agency Profile	2
Growth and Population.....	5
Services	6
Water	6
Wastewater	10
Storm Drain System	13
Streets and Transportation.....	15
Parks	16
Police	18
Other Service Providers	19
Service Rates.....	20
Local Accountability	22
Municipal Service Review Determinations	23

LOCAL AGENCY FORMATION COMMISSION AUTHORITY

The fundamental role of the Local Agency Formation Commission (LAFCo) is to implement the Cortese-Knox-Hertzberg Act (The Act) consistent with local conditions and circumstances. The Act guides LAFCo's decisions. The major goals of LAFCo as established by The Act are to:

- Encourage orderly growth and development;
- Promote orderly development;
- Discourage urban sprawl;
- Preserve open-space and prime agricultural lands by guiding minimizing resource loss;
- Exercise its authority to ensure that affected populations receive efficient services;
- Promote logical formation and boundary modifications that direct the burdens and benefits of additional growth to those local agencies that are best suited to provide services;
- Make studies and obtain and furnish information which will contribute to the logical and reasonable development of local agencies to provide for present and future needs;
- Establish priorities by assessing and balancing community service needs with financial resources available to secure and provide community services and to encourage government structures that reflect local circumstances, conditions and financial resources;
- Determine whether new or existing agencies can feasibly provide needed services in a more efficient or accountable manner and, where deemed necessary,

As set fourth in § 56425 (g) of The Act, on or before January 1, 2008, and every five years thereafter, Humboldt LAFCo shall review and update each Sphere of Influence (SOI). Additionally, an MSR shall be conducted with, or in conjunction with the action to establish or to update a SOI pursuant to The Act. Together, the SOI and MSR documents analyze the City's ability to serve existing and future residents.

In order to prepare and to update Spheres of Influence in accordance with § 56425, Humboldt LAFCo shall conduct a service review of the municipal services provided in the City of Fortuna. The commission shall include in the designated for service review area any other geographic area as is appropriate for an analysis of the services to be reviewed, and shall prepare a written statement of determinations with respect to the following:

- (1) Infrastructure needs or deficiencies;
- (2) Growth and population projections for the affected area;
- (3) Financing constraints and opportunities;
- (4) Cost avoidance opportunities;
- (5) Opportunities for rate restructuring;
- (6) Opportunities for shared facilities;
- (7) Government structure options;
- (8) Evaluation of management efficiencies; and
- (9) Local accountability and governance.

AGENCY PROFILE

The City of Fortuna is located in Humboldt County, about 20 miles south of Eureka and 253 miles north of San Francisco. The city lies along Highway 101, east of the Eel River and is bounded by rising hillsides, bluffs, scattered forests, and rural residences.

The City of Fortuna was incorporated on February 20, 1906, making it the fifth city formed in Humboldt County. Through several annexations the city has grown to encompass about 4.7 square miles within the city limits. The last annexation occurred in 1980. Fortuna's growth has been moderate with an average of 1.4 square miles annexed per decade. The city's Sphere of Influence (SOI) includes approximately 6,877 acres for a total of 10.7 square miles. The SOI includes both incorporated and unincorporated areas within which the city has primary responsibility for the provision of public services.

In Fortuna, the SOI extends up the 101 corridor east of the Eel River and north of Palmer Creek. The SOI extends south east, incorporating a portion of the North Fork Strongs Creek before descending south to the Redwood Empire Golf Course and Rohnerville Airport, connecting back to the Eel River near the Van Duzen confluence.

Figure 1 on the following page, illustrates the Fortuna City limits and SOI. The figure also illustrates the major roads and highways that bisect the City of Fortuna, as well as the city's proximity to the Eel and Van Duzen rivers.

Fortuna is a charter city, utilizing the Council-Manager form of government. The five member city council is elected at large by city residents, who are registered voters. The council members in turn select one of their own members to serve as mayor. The city employs a City Manager who is responsible for administering and implementing the policies set by the council.

The 2007 – 2008 City of Fortuna Fiscal Year Budget allocates funds to support 74 full-time employees. The number of regular part-time and seasonal employees' ranges from 10 to 25 depending upon the time of the year¹The City of Fortuna Organization Chart for the 2007 – 2008 Fiscal Year is presented in figure 2.

The City Council meets at 6 p.m. on the first and third Monday of each month². Meetings are open to the public and are held in the Council Chamber at the Fortuna City Hall. The city's website includes information on city services, city departments and contact information, as well as City Council and Planning Commission agendas, and the city's municipal code.

Figure 1. City of Fortuna - City Boundary and Sphere of Influence

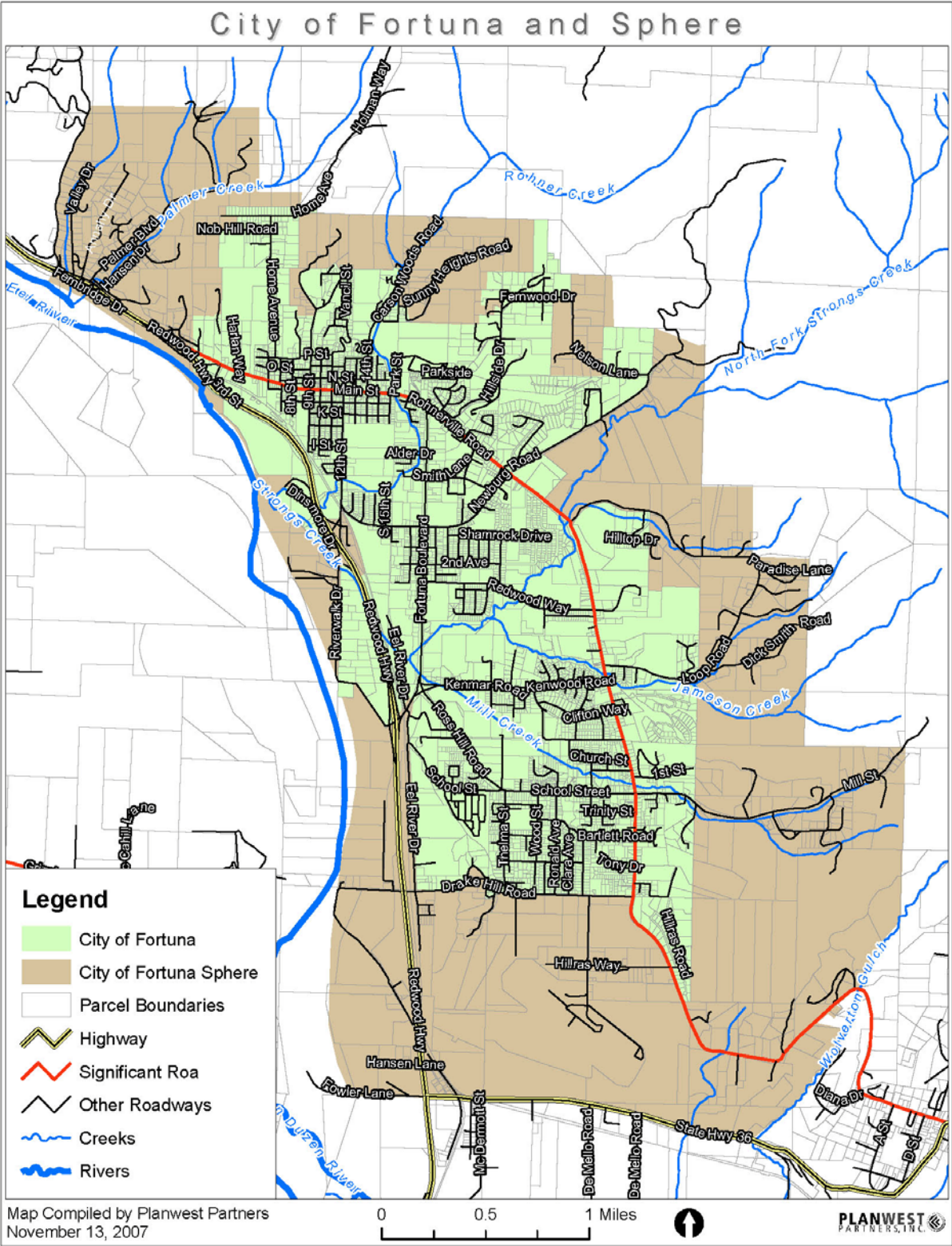
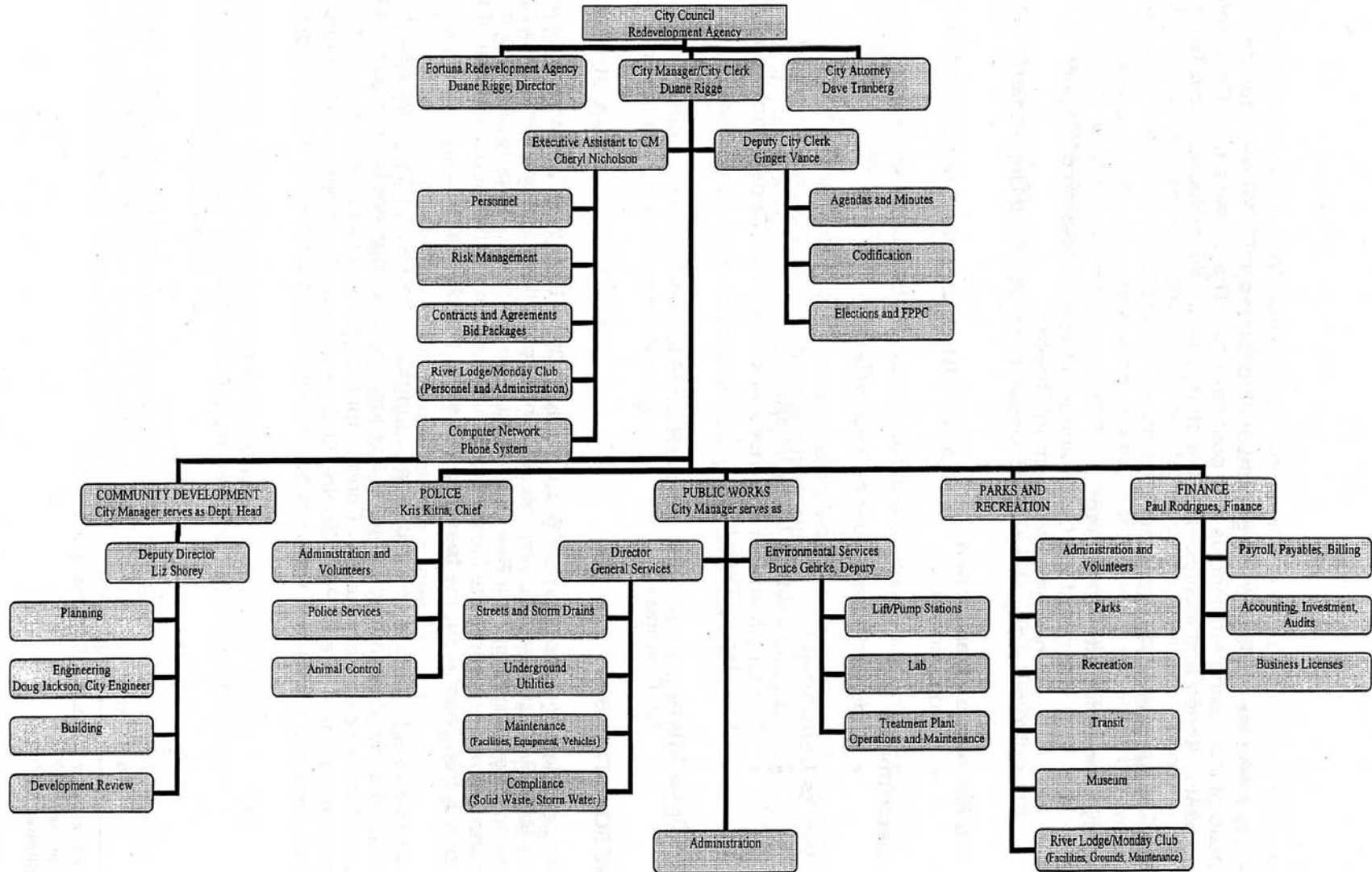


Figure 2 City of Fortuna Organizational Chart 2006 – 2007



GROWTH AND POPULATION

County Population and Growth

In 2000, the Humboldt County population was 126,518³. Between 1985 and 1990, the county population grew by about 8,000 people (7.3 percent), with an average annual growth rate of 1.4 percent. California DOF projections indicate an anticipated total compounded growth of 13.1 percent over the next 17 years (to 2025), which is lower than the growth experienced in Humboldt County the past 20 years (16.6 percent)⁴.

City of Fortuna Population and Housing

The City of Fortuna has grown by 3,650 people during the past 25 years from 7,600 in 1980 to 11,250 in 2005. The largest population growth occurred from 1985 through 1990 when the city grew by 900 people. Growth slowed between 1995 through 2000, with only a 7.6 percent change. Population growth slowed further between 2000 and 2005, with only a 6.7 percent change⁵. Based on these trends, Fortuna's 2030 population is projected to be 15,926.⁶

In 1990, Fortuna's 3,711 housing units represented 7.3% of total housing stock. By 2005, Fortuna's 4,729 housing units represented 8.2% of total housing stock⁷. In 2005, Fortuna had an average of 2.38 people per household. At the full build-out, Fortuna's 1993 General Plan would accommodate 5,020 housing units.

The city is planning for future growth and is scheduled to adopt an updated General Plan in 2008. The General Plan update includes the following elements: Land Use, Transportation and Circulation, Natural and Cultural Resources, Parks, Recreation, Open Space and Visual Resources, Public Facilities and Services, Public Health and Safety, Economic Development, and Community Character/Design. The General Plan update also includes a Mill District Area Plan for the former PALCO Mill site and adjacent area, an extension of the city's Planning Area to include Alton, and three proposed annexation areas.

The city is also planning to upgrade aging infrastructure and the increase in residents with various infrastructure and service improvements. The city's Five-Year Capital Improvement Program includes a number of water projects, wastewater projects, drainage projects, street projects and community projects.

SERVICES

The City of Fortuna provides the following services:

- Water Supply;
- Wastewater Collection and Disposal;
- Storm Drainage;
- Street Improvements, Maintenance and Lighting;
- Parks and Recreation;
- Law Enforcement; and
- Planning and Zoning.

WATER

Governance and Operations

The City of Fortuna provides drinking water from city-owned and operated groundwater wells. The Environmental Services Division of the city's Public Works Department operates and maintains the water pumping and treatment facilities and equipment. Routine maintenance of pumping and treatment facilities is done on a daily basis. The Public Works Department also utilizes a computer generated maintenance schedule.

The General Services Division of the city's Public Works Department operates and maintains the underground water infrastructure, including water mains and related items including water meters and services, and other items located in the street right of way. The Engineering Division of the Community Development Department is responsible for the orderly development of the city's water system and provides engineering design services.

The City of Fortuna performs drinking water testing on a continuous basis, according to state and federal laws, and reports these findings annually in a Consumer Confidence Report and Newsletter⁸. A City of Fortuna Water System Improvement Study was conducted in 2007.

The city's FY 07 - 08 water operating budget for was \$1,165,145⁹. The city paid \$425,294 for debt service, \$41,100 toward the principal and \$384,194 towards interest. Water fund debt has been acquired by the city as a result of the Campton Heights water system, and water bonds issued to complete water replacement and improvement projects.

On July 1, 1985 the city purchased the Campton Height water system for \$443,031. The purchase was financed through an agreement with the former system stakeholder. In FY 07 – 08, Fortuna will make 12 monthly payment of \$4,166 including interest at 10.13%. The final payment will be made in July of 2010¹⁰.

On October 11, 2006, the city issued \$8,085,000 in revenue bonds in order to complete a number of city water improvement projects. The projects are outlined in the city's 2007 – 2008 CIP. The bond interest rates range from 3.375% to 5%, with the first bond principal payment scheduled for October 2009. The debt will be retired in October of 2036.

Water connection fees, charged of new development and new water hook-ups, and bond monies are used to pay for waster system capital improvements.

Infrastructure, Facilities and Services

Based on the 2006 Fortuna Consumer Confidence Report, the city provides water to approximately 11,649 residents with approximately 4,331 water services connections. The city also supplies water for fire protection.

The city's water source is groundwater from five wells on Eel River Drive located near the southwest corner of the city. The city's Urban Water Management Plan describes the wells as shallow wells, less than 100 feet deep. Four pumps, one situated at each well, pump water through the aeration tower at the Corrosion Control Facility and into a 120,000 gallon wet well, where water is also chlorinated. Treated water from the wet well is pumped through two transmission mains (12 inch and 14 inch) to the distribution system network. The Corrosion Control Facility has three 100-horse power pumps; running in an alternating pattern with a maximum of only two pumps operating together at one time.

The fifth well pump is a high head system that delivers water directly to the Stewart Street reservoirs through the city's distribution system. The city's distribution system is divided into eight separate pressure zones. Each zone is pressurized by a series of pumps, reservoirs, water tanks and/or hydro-pneumatic tanks. The eight pressure zones in the city are determined by location and the hydraulic grades of the system.

The 2005 Water System Hydraulic Study conducted by Winzler and Kelly, describes the city's eight pressure zones as follows:

Zone 1 includes the majority of the city's downtown area between Fortuna Boulevard and Kenmar Road. The two 500,000 gallon Stewart Reservoirs supply the water to Zone 1, and the pumps at the Corrosion Control and Chlorination Facility supply the water to the Stewart Reservoirs.

Zone 2 is located east of the Vancil Reservoir and northeast of Rohnerville Road. The Stewart Street Pumps supply water to Zone 2 and the Vancil Reservoir from the Stewart Reservoirs. The Vancil Reservoir is a five million gallon (MG) storage reservoir that also serves Zone 3. Zone 2 loops back to Zone 1 through pressure reducing valves (PRVs) located at the intersections of Valley View Road and Rohnerville Road, and at Franklin Avenue and Newburg Drive.

Zone 3 includes Vancil Street north of the Stewart Street Reservoirs. The Vancil Pump Station, located at the Vancil Reservoir, supplies the water to Zone 3 through two 5-hp booster pumps, one 20-hp fire pump, and two hydro-pneumatic tanks.

Zone 4 encompasses the northeastern section of the water system and is served by the Hillside Reservoir. The Hillside Reservoir has a volume of 250,000 gallons and is supplied by the Underhill Pump Station, which boosts water to the reservoir from Zone 2.

Zone 5 is in the northwestern section of the city, and is served by the Holman Tank. The Holman Tank is an aging 36,000-gallon elevated tank that is supplied by the Home Avenue Pump Station. The Home Avenue Pump Station has two 7.5-hp pumps that boost water from Zone 1 to the storage tank.

Zone 6 is in the southern section of the city, located between Kenmar Road, Drake Hill Road, and Rohnerville Road. The Kenmar Pump Station boosts water from Zone 1 to the Campton Heights Reservoir, a 1 MG reservoir that supplies Zone 6. The Kenmar Pump Station consists of two 50-hp pumps and a single 30-hp pump. Zone 6 loops back to Zone 1 through a PRV located on Kenmar Road.

Zone 7 encompasses the most southern section of the city. This zone has the highest hydraulic grade in the city and is served by the Drake Hill Pump Station. The Drake Hill Pump Station consists of two 20-hp pumps, one 30-hp fire pump, and two hydro-pneumatic tanks. The Drake Hill Pump Station boosts water from Zone 6 to the Airport Road and Rohnerville Road (southern) areas.

Zone 8 serves the Forest Hills Subdivision, west of Rohnerville Road and north of the Campton Heights Reservoir. The Seneca Pump Station pumps water from Zone 6 to Zone 8. The Campton Heights Reservoir located in Zone 6 supplies the Seneca Pump Station, which consists of two 5-hp pumps, one 75-hp pump, and two hydro-pneumatic tanks.

The city's distribution system includes 37 miles of water piping. The system is composed of both new and old piping, with a mix of older asbestos-cement and cast-iron pipe, and newer polyvinyl chloride or PVC pipe.

Demand and Capacity

The overall current storage capacity of the city's water system is approximately 7.5 MG¹¹. The city's water supply is limited by water rights. According to the Humboldt County Capital Facilities Technical Report, the city is extracting approximately 75 percent of its groundwater allocation under current rights. The city has approximately 1,489 connections available before it would need to apply for additional water rights.

Infrastructure Deficiencies

The 2007 Water System Improvement Study conducted by Oscar Larson and Associates provided the following list of recommended improvements along with current project status:

- Replace the pumps at the Corrosion Control Facility. The existing pumps at the Corrosion Control Facility could supply approximately 900 gpm each, for a total of capacity of 3,600 gpm and are not properly sized for current conditions. As a result, they pumps have been severely worn due to cavitation. The three existing pumps will be replaced with three new pumps that are a different style and capacity. This will increase the pumping capacity to approximately 2,400 gpm with two pumps running. This capital replacement project is scheduled to be completed by June 2008.
- Install a parallel 14-inch transmission line from Corrosion Control Facility to Kenmar Drive to provide redundancy. This project was completed in October 2007.
- Extend the water main in Smith Lane to connect to the line in Rohnerville Road; this will close the loop and eliminate the two dead ends at Smith Lane and Rohnerville Road. This project was completed in August 2007.
- The Stewart Reservoirs include an older reservoir, which leaks and needs to be replaced. Additionally, Zone 1 needs more storage to avoid having to bring water back down from the Vancil Reservoir during peak demand conditions. Recommended Improvement: Construct a new 2 MG Zone 1 Reservoir in Rohner Park, and include piping to connect the new reservoir to the distribution system. This improvement would also include replacement of the existing pump station at the Stewart Street site with a new pump station at the new reservoir site. This project currently is in the design phase and scheduled to be completed by the fall of 2008.
- Construct a new 6-inch line in the alley between 13th and 14th Streets, from N to P Streets, and replace the existing 4-inch line in 14th Street with a new 6-inch line from L Street to N Street. This will provide additional fire flow in the areas North of N Street and is anticipated to improve system performance with the new reservoir. This project will be completed with the new 2 MG tank project in the fall of 2008.
- Improve piping in Zone 1, particularly to improve water delivery from the Corrosion Control Facility to the new reservoir in Rohner Park. This project will be completed with the new 2 MG tank project in the fall of 2008.
- The Holman Tank in Zone 5 is in poor condition and is too small to provide fire flows for that zone; Zone 3 is served by a hydro-pneumatic pump system that also does not have adequate capacity to provide fire flows in that zone. Recommended Improvement: Connect Zone 5 and Zone 3 together and up-size the Zone 3 pumps to provide adequate fire flows for the combined zone. This project is currently in the design phase and is expected to be completed in the summer of 2009.
- The Vancil Reservoir leaks, and is currently much too large for the area it serves. Recommended Improvement: Construct a berm across the middle of the reservoir to divide it in half, for ease of operation and maintenance, and reline the entire reservoir to

correct existing leaks. This project currently is in the design phase and is scheduled to be completed by the fall of 2008.

- Review design calculations and construction details for the reservoirs to determine if the reservoirs meet the current design standards for seismic anchorage, or if improvements are necessary to bring the reservoirs up to current design standards. The design RFP will be released by May 2008 with completion scheduled by the spring of 2009.

Water system infrastructure deficiencies have been addressed in the city's five Year CIP. The FY 2007 – 2008 five year CIP lists thirty two water projects to be completed over the next five years. The total cost for improvements is \$7,695,000, bond monies will account for \$6,748,000 of the total improvement costs and water revenues will account for \$947,000. The city implemented a long-term water utility rate structure to finance these improvements over the next 5 years and to also increase the capital reserve fund to sustain future capital improvement projects.

WASTEWATER

Governance and Operations

The City of Fortuna Public Works Department maintains and operates the city's wastewater system, which consists of eight pump stations, the collection system and a Wastewater Treatment Plant (WWTP).

The Environmental Services Division of the city's Public Works Department operates and maintains all the wastewater pumping and treatment facilities and equipment. Routine maintenance is performed daily on the wastewater pumping and treatment facilities.

The city's wastewater system operating budget for FY 07 - 08 was \$1,945,359¹². The city paid \$824,316 for debt service, \$194,000 toward the principal and \$631,316 towards interest. Wastewater fund debt has been acquired by the city as a result of City Hall remodeling, and wastewater revenue bonds issued to complete wastewater improvement projects.

The City of Fortuna has acquired a semi-annual lease payment to FmHA for COP funds used to remodel City Hall. COP issued funds in 3/1/95 for \$400,000 at 6.875% for 25 years.

On October 11, 2006, the city issued revenue bonds in the amount of \$13,820,000 in order to complete the Wastewater Treatment Expansion. The interest rates are from 3.250% to 5% with the first principal payment scheduled for October 2007. The debt will be retired in October of 2036.

Wastewater connection fees, for new sewer hook-ups, and bond monies are used to pay for wastewater system capital improvements.

Infrastructure, Facilities and Services

Wastewater Collection¹³: The city's wastewater collection system customers are 90% residential and ten% commercial and industrial. The city's wastewater collection system extends throughout most of the areas within the City Limits and is considered generally adequate to serve the existing developed areas of the city. Palmer Creek Community Services District (PCCSD) also connects into the city's treatment system. Wastewater flows are measured at the headwork's structure within the waste water treatment plant (WWTP) and includes the PCCSD flows, which are metered separately for billing purposes.

The City's collection system ultimately feeds into two main lines; one gravity main line and one force main line. The gravity main line is a 15-inch line located at Loni Drive. The second main line is a 12-inch force main. This force main, ties into another force main that originates at the California Conservation Corps (CCC) Wet Well Pump Station on Alamar Way. This force main transfers the flows north along Dinsmore Drive to the WWTP.

There are eight city owned pump stations in the collection system, which include the Strongs Creek, CCC, North Main Street, Rohnerville Road, Rancho Buena Vista, Rundells, Kenwood Meadows/Laurwood and Job Hills pump stations. These pump stations are equipped with various pumps ranging in size from 2 inch to 8 inch pumps that provide the majority of the pumping capacity for average daily flow conditions along with secondary pumps for additional capacity during peak flow conditions.

Wastewater Treatment¹⁴: The wet weather capacity of the plant is achieved by storing excess inflow in temporary storage ponds during peak flows. When wet weather flows exceed three MGD, wastewater is diverted to three large holding ponds. The adjacent storage ponds have two- to – three day capacity during wet weather; and when wastewater flows recede, the wastewater is pumped through the conventional treatment system for treatment. When prolonged storms cause wastewater flows to exceed three MGD for extended periods, wastewater from the storage ponds is treated to meet effluent standards and then chlorinated and dechlorinated, prior to being discharged to the Eel River.

Plant upgrades and expansion were completed in June of 2007. These improvements included upgrading the existing hydraulic capacity of the plant and adding new unit operations including; a new anaerobic digester; a secondary clarifier; a composting solids handling system; and odor control biofilters. The hydraulic capacity of the plant was increased with the addition of a new secondary clarifier and a new discharge pipe. A new operations building, and a grit handling and headwork's system were also constructed, as well as co-gen capability which converts digester gases into electricity to supplement the electrical power needed to operate the WWTP.

Wastewater Disposal¹⁵: The City of Fortuna currently discharges at two different discharge locations, one primary location (SN001) to the Eel River during the winter high river levels and an alternative location (SN003) to pecculation ponds that are utilized during the summer low river levels. The National Pollutant Discharge Elimination System (NPDES) permit for the City of Fortuna notes that the city has invested in an aggressive program over the last few years to reduce Infiltration and Inflow (I/I) in the wastewater collection system. In consideration of the use of

reasonable methods for controlling I/I, the city has been allowed to operate the alternative discharge location during prolonged storm events when the city’s storage ponds exceed capacity.

Effluent Limitations¹⁶. The City’s NPDES Permit for WWTP discharges and effluent limitations are shown in Table 1:

Table 1 Effluent Limitations for each discharge location

Discharge Location		SN001		
Constituent	Units	30-Day Average	7-Day Average	Daily Maximum
BOD (Biochemical Oxygen Demand)	mg/L	30	45	60
	lb/day	375	563	751
Total Suspended Solids (TSS)	mg/L	30	45	60
	lb/day	375	563	751
Settleable Solids (SS)	ml/L	0.1	---	0.2
Coliform Organisms (Total)	MPN/100 mL	23 (median)	---	230
Chlorine Residual	mg/L	---	---	0.1
pH (to the Eel River)	pH units	within 6.5 to 8.5 pH units at all times		
pH (to the perc pond)	pH units	within 6.0 to 9.0 pH units at all times		

Demand and Capacity

Wastewater Collection: There are eight city owned pump stations in the collection system, which include the Strongs Creek, CCC, North Main Street, Rohnerville Road, Rancho Buena Vista, Rundells, Kenwood Meadows/Laurwood and Nob Hill pump stations. Under present conditions, the pumping stations and collection systems seem able to handle both average daily flows and peak flows, with some minor exceptions during wet winter flows.

WWTP Capacity. The WWTP currently treats 1.0 Million Gallons per Day (MGD) during the dry weather season (June through September), and an average of 1.9 MGD annually (wet and dry weather flows). The recently upgraded WWTP has an average dry weather capacity of 1.5 MGD, and a wet weather capacity of up to 7 MGD. The WWTP can accommodate services for approximately 15,000 people. When the capacity of the plant exceeds 75 percent, the Regional Water Quality Control Board will require that they be notified, and a plan be established and approved.

Infrastructure Deficiencies

The most significant collection system issues relate to existing collection system piping capacities. The 12- and 15-inch sewer lines located between 9th and 12th Street, Loni Drive, and the area between I Street and L Street, respectively have flat grades and are subject to I/I. The old gravity lines located along Newburg Road are considered at capacity and not suitable for handling new or increased flows. There is also a lack of collection system piping in currently undeveloped areas. Wastewater service is currently not extended to the former PALCO mill site

or Alton areas. The city will also need to develop a long-term solids handling plan for disposing of sewage sludge.

Wastewater system deficiencies are being addressed in the city's Five-Year Capital Improvement Program. The 2007 – 2008 CIP lists eighteen wastewater projects to be completed over the next five years. The total cost for improvements is \$10,476,000. The city implemented a long-term sewer utility rate structure to finance these improvements over the next 5 years and to also increase the capital reserve fund to sustain future capital improvement projects. The improvements include addressing I/I issues throughout the city, the installation of a gas main to the WWTP, the replacement of Laterals on 9th between N and P Street, and continual funding for the sewer cleanout program.

Storm Drain System

Governance and Operations

The City of Fortuna Public Works Department has three divisions: Administration, General Services, and Environmental Services. One of the major activities of the Public Works Department, General Services Division is responsible for the management, maintenance and operation of the storm drain system.

The Administrative Division is responsible for management of the storm drain system and the General Services Division is responsible for the maintenance of the storm drain system, which includes 300 drainage structures, several miles of drainage ditches, pipeline facilities and stream clearance activities¹⁷.

Infrastructure, Facilities and Services

Winzler & Kelly Consulting Engineers prepared a Storm Drain Master Plan update in July 2005, which provides a detailed overview of the existing system, and recommendations for improving storm drain system deficiencies.

According to the 2005 Storm Drain Master Plan, the majority of the storm drain system within the City Limits consists primarily of Reinforced Concrete Pipe (RCP) and corrugated metal pipe (CMP) storm drains. In the rural areas surrounding the city, the storm drainage system consists largely of roadside ditches and culverts.

Infrastructure Deficiencies

The 2005 Storm Drain Master Plan is organized according to the six major natural drainages located within the city limits. These drainages include the North Fortuna Drainage; Rohner Creek Drainage; Hillside Creek Drainage; Strongs Creek Drainage; Jameson Creek Drainage; and Mill Creek Drainage.

The hydraulic analyses provided in the 2005 Master Plan identified 79 drainage structures within the City of Fortuna that were considered deficient (i.e., undersized for the 25-year design flow). The identified deficiencies were combined into 55 recommended improvement projects with an estimated total implementation cost of approximately \$14,787,000.

In 2007, the Fortuna Redevelopment Agency through the Fortuna Public Financing Authority issued over \$12.6 million in revenue bonds to finance the construction or remediation of various infrastructure projects. Many of the stormwater capital improvement projects identified in the 2005 Storm Drain Master Plan and listed below are within the Redevelopment Project Areas and will be funded and scheduled for completion by the fall of 2010.

North Fortuna Drainage Area: This drainage area is located in the northwest section of the city, in an area zoned primarily for commercial and residential uses. Recommended improvements for this area include three culvert replacements, six storm drain replacements and one drainage channel improvement. Total improvements for the North Fortuna Drainage Area are projected to cost \$1,332,300.

Rohner Creek Drainage Area: This drainage area is located in the northern portion of the city, bordered by the North Fortuna Drainage. Recommended improvements for this area include replacement of five storm drains, one new storm drain, and creek widening and rerouting. Total improvements for the Rohner Creek Drainage Area are projected to cost \$5,343,000.

Hillside Creek Drainage Area: This drainage area is located south and east of the Rohner Creek Drainage Area and north and west of the Strongs Creek Drainage Area. Recommended improvements for this area include replacement of six storm drains, repair of a detention basin, and improvement of a detention basin. Total improvements for the Hillside Creek Drainage Area are projected to cost \$2,248,000.

Strongs Creek Drainage Area: This drainage area is located in the central area of the city and is bordered by the Rohner Creek and Hillside Creek Drainage Areas to the north and the Jameson Creek Drainage Area to the south. Recommended improvements for this area include nine storm drain replacements and a new detention basin. Total improvements for the Strongs Creek Drainage Area are projected to cost \$2,035,000.

Jameson Creek Drainage Area: This drainage area is located in the southern part of the city and is bordered by the Strongs Creek Drainage Area to the north and the Mill Creek Drainage Area to the south. The only improvement recommended in this area is the replacement of one culvert on Rohnerville Road, if the existing culvert fails, or as development warrants.

Mill Creek Drainage Area: The Mill Creek Drainage Area is the southern-most drainage in the incorporated city limits. Recommended improvements in this area include the replacement of 15 storm drains, three new detention basins, two new storm drains, and six culvert replacements. Total improvements for the Mill Creek Drainage Area are projected to cost \$4,356,000.

The City of Fortuna's 2007 - 2008 CIP identifies various drainage projects to be completed within the next five years. A total of \$7,657,000 has been allocated for the drainage projects, \$6,195,000 of which, are in the redevelopment area. One of the projects includes a Rohner Creek bypass from Main Street to South 15th, which is projected to cost \$3,600,000.

STREETS and TRANSPORTATION

Governance and Operations

The General Services Division of the City's of Fortuna's Public Works Department is responsible for the street system, which includes maintenance of the streets, traffic control signs, the roadway striping and pavement markings, and street sweeping programs. The Division also handles roadside maintenance, as well as, maintenance and repair of the city's street light system and traffic signals¹⁸. The city allocated \$371,571 of the General Fund towards street improvement and maintenance.

Infrastructure, Facilities and Services

Fortuna's street system includes approximately 52 miles of streets and 400 traffic control signs. The approximately seven miles of Highway 101 that run though the city are maintained by Caltrans.

Demand and Capacity

Level of Service (LOS) is a qualitative indicator of the relative ease or congestion of traffic movement; with Level 'A' representing free flow conditions and Level 'F' representing conditions where traffic is at or over roadway capacity. The City of Fortuna's existing adopted LOS standard is contained in the 1998 General Plan Circulation Element. This current standard allows for a minimum LOS of 'D' for Main Street and LOS 'C' for all other roadways.

As part of the General Plan Update, an analysis was performed of 16 critical intersections. Fourteen of the 16 intersections study intersections operated at an acceptable LOS.

Infrastructure Deficiencies

As a result of the critical intersection analysis performed as part of the General Plan Update, it was determined that the North Fortuna Boulevard/Main Street-Rohnerville Road and Kenmar Road/Highway 101 South Ramp are operating below the current LOS standard contained in the 1998 General Plan Circulation Element.

Road system deficiencies are being addressed in the city's Five-Year CIP. CIP street projects are funded through STIP, portions of the General Fund, TDA and gas tax. The 2007 – 2008 CIP allocates \$4,222,000 for street projects, which includes: \$2,415,000 for street reconstruction and

expansion projects, \$1,452,000 on street overlays, \$25,000 on alley reconstruction, \$275,000 on sidewalk and bike lane reconstruction/ADA projects, and \$55,000 for streetlights and traffic signals.

PARKS

Governance and Operations

The Parks and Recreation Department has three divisions, which include Parks, Recreation and the Depot Museum. The department is also responsible for the operation of the Senior/Disabled Bus¹⁹. The department is administered by the director, and assisted by administrative staff, maintenance workers, and a part-time/seasonal staff of approximately 20, which includes recreational program supervisors, leaders, and aides to run recreational programs. A full-time Recreation Supervisor position was added as part of the 2006 – 2007 Fiscal Year Budget.²⁰

The Parks Division is responsible for the maintenance and landscaping of the City Parks, Fortuna Boulevard Medians, Monday Club, River Lodge, Main Street planters, City Hall, Library and Chamber of Commerce²¹.

The Recreation Division is responsible for the administration of city leisure programs, the reservation and scheduling of all park facilities, daily reservations and dispatching of drivers for the Senior/Disabled Bus Service and secretarial support for the Park and Recreation Commission and Historical Commission²².

The Depot Museum Division provides support staff to the Historical Commission that was established specifically for the preservation of the Northwestern Pacific Depot. Park Staff assist the Depot Museum staff with various duties, in addition to building repairs, maintenance and improvements made to the facility.

In the 2007 – 2008 budget allocates \$701,971 of the General Fund towards parks (\$375,739), recreation programs (\$310,126), and the Depot Museum (\$16,106). Revenues from fees charged for recreational programs and facility rental are also used for park and recreational facilities, but the fees collected are not a substantial portion of the funds spent on facility maintenance

Infrastructure, Facilities and Services

Rohner Park: Rohner Park is located in the center of Fortuna's downtown district. The 55-acre multi-use park serves as a hub of community activities with recreational structures and facilities including, but not limited to: the Depot Museum, the Firemans Pavilion, Park office, two room Recreational Hall, Rodeo Arena, cookshack with covered patio, three Little League baseball fields, batting cages, a recreation softball field, an outdoor basketball court, horseshoe pits, two playgrounds, a pistol range, a volleyball court, public restrooms and a community forest.

Newburg Park: Newburg Park is a 20-acre community park located on the corner of Rohnerville and Newburg Roads. Recreational facilities in Newburg Park include two hardball fields, three softball diamonds, one regulation soccer field, and seven additional soccer fields, a picnic area, a playground, an all weather walking path, public restrooms, parking and a large expanse of open space.

Local School Grounds: Many of the public schools in Fortuna have play and recreational facilities. The Parks and Recreation Department has a shared agreement with Fortuna High school and elementary schools to use gym and school field facilities with reciprocal use rights for school teams to use Rohner and Newburg Parks for soccer, baseball and certain track and athletic events. This partnership allows the community to maximize use of available parks and facilities.

Mini/Pocket Parks. There are two mini/pocket parks in Fortuna. These include the Chamber Park, approximately 2,500 square feet, located between the Chamber of Commerce building and the Fortuna Library. The second park, named Walk and Overlook Park is located near the River Lodge and is approximately 4,000 square feet in size.

River Lodge. River Lodge is a meeting/conference facility with approximately 13,000 square feet of meeting spaces, which is rented out for community meetings, events, and private functions.

The Monday Club. The Monday Club built in 1923, is currently rented out for social and musical events. The club was recently renovated; renovations included a new roof, heating system, paint, electrical, ADA compliant restrooms, and ADA lift, remodeled front porch, refinished floors, and upgraded doors and windows.

Demand and Capacity

Currently, with a population of 11,250, Fortuna has 75 acres of community parkland, an average of 6.7 acres per 1,000 residents. The City of Fortuna does not currently have a parkland standard. In 1975, the state adopted the Quimby Act which is designed to ensure adequate open space acreage in jurisdictions adopting Quimby Act standards (e.g., 3 – 5 acres per 1,000 residents). The Quimby Act standard of 3 – 5 acres per 1,000 residents is currently being met in the city.

Infrastructure Deficiencies

The 2007 – 2008 CIP list a variety of projects that will improve and enhance existing parks and recreational facilities. The CIP allocates \$368,000 towards River Lodge improvements and the renovation of the Monday. The CIP also allocates \$205,000 towards city park projects. City park projects include, but are not limited to, Newburg Park improvements, Museum expansion, Newburg park playground equipment, park picnic tables, the installation of a retractable basketball hoop and basketball court resurfacing.

Police

Governance and Operations

Police Protection services, traffic patrol and animal services within the Fortuna City limits are provided by the Fortuna Police Department (FPD). The Humboldt County Sherriff Department provides police protection within the City of Fortuna's SOI, but outside the city limits. The California Highway Patrol provides traffic patrol along the Highway 101 corridor within the city limits. The FPD does occasionally assist with calls outside the city limits when requested under existing mutual aid agreements between the city and the county.

FPD staffing has remained relatively the same for the past 35 years, although the population has continued to increase. The FPD has 15 sworn and nine non-sworn employees²³. The 15 sworn employees consist of one police chief, four sergeants, three field training officers and seven police officers. In addition to sworn staff, the department employs an office supervisor, one records clerk, five dispatchers, and two community service officers. The FPD is assisted by approximately ten volunteers.

FPD funding comes primarily from the city's General Fund. The 2007 – 2008 budget allocates \$2,184,053 towards the provision of police services. In addition, one Community Service Officer and one sworn officer position are funded by the COPS fund.

Infrastructure, Facilities and Services

The FPD operates out of a single station, located at 621 11th Street in Fortuna. The FPD has two holding cells for persons awaiting transfer to the Humboldt County jail, or questioning. The FPD is unique in that they provide first response for medical calls in Fortuna, versus the majority of other cities where the Fire Department responds to medical calls. Every police unit is equipped with oxygen, a full medical bag, and an automated deliberator. In addition, the FPD maintains 19 vehicles, 13 of which are patrol cars.

The FPD responded to approximately 11,000 calls in 2006, with an average response time of less than three minutes²⁴. The FPD Dispatch Center handles all 911 calls for the Eel River Valley. They handle calls for the Ferndale, Rio Dell and Fortuna Police Departments in addition to dispatch call for the Fortuna Volunteer Fire Department. The dispatch center received 9,828 calls for service in 2003, 10,261 calls for service in 2004, and 14,345 calls for service in 2005.²⁵

Demand and Capacity

The Fortuna Police Department currently has one officer per 703 residents. In 2007, the City of Fortuna through the Fortuna Public Financing Authority issued over \$2 million in revenue bonds to finance the acquisition and construction of a new police facility scheduled for completion by the fall of 2010.

FY 07 - 08 budget goals include: to maintain and enhance, if possible, the level of service to the growing community by deploying personnel and resources effectively and utilizing volunteers; to be good financial managers, expanding fiscal resources wisely and at the same time developing and expanding city revenues when applicable; and to emphasize departmental training and personnel development in order to professionally serve the community.

Other Service Providers

Fire Protection Services: The City of Fortuna is within the Fortuna Fire Protection District (FFPD). The FFPD is staffed by the Fortuna Volunteer Fire Department (FVFD), which is comprised of all-volunteer firefighters. The population within the FFPD is approximately 13,000. The FVFD is organized separately from the FFPD. The FVFD is a non-profit corporation made up of its members and governed by the department's chief officers. The FFPD provides the volunteer fire department with operational and capital funding, equipment, apparatus, utilities, and maintenance. The average annual revenue for the FFPD is approximately \$380,000 per year, about 60 percent of which comes from property tax and 20 percent from assessments. The volunteer fire department also raises funds to support its activities aside from firefighting and charitable activities. In addition, the FVFD participates in most Fortuna community events.

The FVFD operates out of three fire stations. The largest station is centrally located on South Fortuna Boulevard, with the two smaller stations located in Hydesville and Campton Heights. The FFPD has complete responsibility within the city for fire protection services and primary responsibility for the area outside of the city, but within the district for structural fires. CAL FIRE has primary responsibility for wild land fires outside of the city, but within the FFPD.

Library Services: The City of Fortuna library provides information, reading, audio, and visual materials. The present library has reached capacity at 18,000 books and has a monthly circulation around 9,000 books per month. The city has signed a memorandum of understanding between the City of Fortuna and the Humboldt County Library. The MOU transfers all library equipment owned by the City of Fortuna to the county. The Humboldt County Library is responsible for maintenance, supplies, and property insurance of the equipment, whereas the city owns the building and pay for repairs and maintenance. In 2005 – 2006 the city spent \$6,286 for library related expenses and the 2007 – 2008 Budget allots \$9,103 from the General Fund for library related expenses.

Solid Waste Services: The City of Fortuna has franchised municipal solid waste collection services to Eel River Disposal and Resource Recovery (ERD). ERD offers Fortuna residents weekly garbage pickup and bi-weekly curbside recycling and greenwaste. The city also promotes composting and sells compost bins at a subsidized rate to Fortuna residents. The city's Solid Waste Department is responsible for developing and implementing the many programs contained in the Fortuna Source Reduction and Recycling Element (FSRRE). The programs include public education, technology transfer, recycling, and waste reduction activities. The department is also

responsible for supervision of solid waste franchise agreements. The 2007 – 2008 Budget allocates \$69,039 towards Solid Waste Department expenses.

Transit Services: The City of Fortuna provides public transit to all Fortuna residents through sponsorship of the Humboldt Transit Authority. The City’s Parks and Recreation Department operates the “Dial-a-Ride” service for seniors over the age of fifty and disabled persons regardless of age. Two buses are in operation Monday through Friday from 8:30 a.m. to 4:30 p.m. One bus operates on Saturday from 9:00 a.m. to 3:30 p.m. Fare Box fees were increased by 25% in order to maintain the minimum requirement that 10% of the Senior Bus operating expenses are recovered from Fare Box revenues. The City of Fortuna 2007 – 2008 Budget allocated \$193,629 towards transit services.

SERVICE RATES

On September 1, 2006 the City Council adopted Resolution 2006-30, which established water and sewer rate fees for the City of Fortuna for fiscal years 2006/07 through 2010/2011. The fee update was preceded by a 2006 Water and Sewer Rate study, which provided the City Council with the background, information and procedure for developing water and sewer rate and fees. The City also notified all property owners within the city of the City Council’s intention to increase water and sewer rates and fees. Less than 50 percent of the property owners submitted written protests about the increase of fees. The water and sewer fees have been used to fund the \$14 million upgrade of the wastewater treatment plant and the \$7 million of critical replacements and improvements of water reservoirs and mains. The following tables reflect the City of Fortuna sewer and water service fees through fiscal year 2010 -2011.

Table 2 Sewer Service Charges Inside City Limits

Customer Type	2007-2008	2008-2009	2009-2010	2010-2011
Residential: Includes all residential dwelling units including single family apartments, etc.	\$33.14 plus \$7.36/100 Cubic Feet over 450	\$36.02 plus \$8.00/100 Cubic Feet over 450	\$37.41 plus \$8.31/100 Cubic Feet over 450	\$38.75 plus \$8.61/100 Cubic Feet over 450
Light Commercial: Includes all businesses that produce an effluent with a strength factor of less than 200 mg/l.	\$32.47 plus \$7.22/100 Cubic Feet over 450	\$35.33 plus \$7.85/100 Cubic Feet over 450	\$36.69 plus \$8.15/100 Cubic Feet over 450	\$38.02 plus \$8.45/100 Cubic Feet over 450
Medium Commercial: Includes all businesses that produce an effluent with a strength factor of between 200 mg/l and 500 mg/l.	\$42.47 plus \$9.44/100 Cubic Feet over 450	\$45.64 plus \$10.14/100 Cubic Feet over 450	\$47.36 plus \$10.52/100 Cubic Feet over 450	\$49.02 plus \$10.89/100 Cubic Feet over 450
Heavy Commercial: Includes all businesses that produce an effluent with a strength factor of greater than	\$85.78 plus \$19.06/100 Cubic Feet over 450	\$90.30 plus \$20.07/100 Cubic Feet over 450	\$93.55 plus \$20.79/100 Cubic Feet over 450	\$96.69 plus \$21.49/100 Cubic Feet over 450

Customer Type	2007-2008	2008-2009	2009-2010	2010-2011
500 mg/l.				
Industrial: Includes any industry where the waste is difficult to treat because of strength, flow, or solids.	\$685.51 plus \$26.47/100 Cubic Feet over 450	\$717.48 plus \$7.36/100 Cubic Feet over 450	\$742.98 plus \$28.69/100 Cubic Feet over 450	\$767.56 plus \$29.64/100 Cubic Feet over 450
<p>b. Outside the City Limits: The rate charged is one and one-half (1.5) times the rate for service within the City Limits.</p> <p>c. Multiple Unit Sewer Rate Calculations: The sewer rates for residential multiple units is calculated by multiplying the residential rate by the number of units. If a commercial establishment has multiple units, the highest user class rate is used and multiplied by the number of units.</p> <p>d. Summer Usage Charge: Residential and Commercial Sewer rates for the month of May through October are based upon an average water usage from the previous winter months of November through April.</p>				

Table 3 Water Service Charges inside City Limits and Campton Heights Service Area

BASE CHARGE				
Meter Size in Inches	2007 – 2008 Monthly Base Fee	2008 – 2009 Monthly Base Fee	2009 – 2010 Monthly Base Fee	2010 – 2011 Monthly Base Fee
5/8 by 3/4	\$ 15.49	\$ 22.20	\$ 22.60	\$ 23.04
1	\$ 27.65	\$ 44.00	\$ 44.06	\$ 44.07
1 ½	\$ 52.61	\$ 88.72	\$ 88.09	\$ 87.21
2	\$ 87.56	\$ 151.32	\$ 149.72	\$ 147.61
3	\$ 187.39	\$ 330.20	\$ 325.82	\$ 320.16
4	\$ 327.16	\$ 580.63	\$ 572.36	\$ 561.73
6	\$ 726.51	\$ 1,296.15	\$ 1,276.76	\$ 1,251.95
USAGE CHARGE				
Amount of Water in Cubic Feet	2007 – 2008 Charges/100 Cubic Feet	2008 – 2009 Charges/100 Cubic Feet	2009 – 2010 Charges/100 Cubic Feet	2010 – 2011 Charges/100 Cubic Feet
0 to 250	Monthly Base Fee	Monthly Base Fee	Monthly Base Fee	Monthly Base Fee
Over 250	\$1.53	\$1.64	\$1.77	\$1.90
<p>b. Outside City Limits: Outside the City Limits and Campton Heights Service Area the rate charged is one and one-half (1.5) times the rate for service within the City Limits</p> <p>c. Summer Usage Charge: Between May and October each year summer water rates are in effect for all customers. The summer rates provide each customer under the base rate with an additional 205 cubic feet of water each month.</p> <p>d. Multiple Unit Water Rate Calculation: The water rates for multiple units are calculated by multiplying the lowest base charge fee and the usage charge by the number of units.</p>				

The City of Fortuna also has a fee schedule for the following: water service deposits, delinquent shut off fee, meter re-set, broken padlock, NSF check charge, backflow prevention devices, fire hydrant meter deposit (for use of a hydrant meter for construction and development purposes), private standby fire service capacity charge, discharge fees (septic discharges, portable toilet discharges, contaminated water, petroleum contaminated water), waste discharge permit fee, installation of a new connection to the city’s water system, and set meter charges. The fee schedule is provided in detail in the 2006 – 2007 City of Fortuna Fiscal Year Budget.

LOCAL ACCOUNTABILITY

Contact Information

City of Fortuna	
Contact:	Duane Rigge, City Manager
Mailing Address:	PO Box 545, Fortuna CA 95540
Site Address:	621 11 th Street, Fortuna CA 95540
Phone Number:	707 725 7600
Email/ Website:	www.sunnyfortuna.com
Types of Services:	water, wastewater, drainage, parks, police
Population Served:	11,250
Size of Service Area (Acres):	6,877 acres
Date of Formation:	1906
Staff and Facilities	
Number of Paid Staff:	74 full-time / 10 – 25 part-time and seasonal

City Council: The Fortuna City Council meets at 6pm on the first and third Monday of each month. Meetings are open to the public and are held in the Council Chamber at the Fortuna City Hall, located at 621 Eleventh Street in Fortuna. City Council agendas are available via the city’s website (<http://gov.sunnyfortuna.com/agendas/index.htm>) and are also posted at City Hall and the Fortuna Library.

Planning Commission: The Planning Commission has regularly scheduled meetings at 7:00 PM at City Hall on the 2nd and 4th Tuesday of each month if there is business. Planning Commission agendas are available via the city’s website (<http://gov.sunnyfortuna.com/agendas/index.htm>) and are also posted at City Hall and the Fortuna Library.

Parks and Recreation Commission: Parks and Recreation Commission meetings are held at 7pm on the fourth Monday of even months in the Council Chamber at the Fortuna City Hall.

Historical Commission: The five-member citizen board meets at an informal breakfast monthly and has the formal meeting on the fourth Wednesday of each odd-numbered month at seven PM in the Council Chamber at the Fortuna City Hall.

Design Review Board: The Design Review Board meets as needed on the 1st and/or 3rd Tuesday of the month.

Rohner Community Park and Recreation District: The Rohner Community Park and Recreation District meet twice a year.

MUNICIPAL SERVICE REVIEW DETERMINATIONS

Infrastructure needs or deficiencies

The city's water system is limited by existing water rights. The city is currently extracting 75% of its groundwater allocation under current rights. The city has approximately 1,489 additional connections available before it will need to apply for additional water rights.

The 2007 Water System Improvement Study conducted by Oscar Larson and Associates provided a list of recommended improvements for the City of Fortuna's water distribution system. The city's FY 07 – 08 five year CIP allocates \$7,695,000 for water system improvements.

Wastewater treatment plant upgrades were completed in June of 2007. The current dry weather capacity can accommodate approximately 15,000 people. The most significant wastewater collection system issue is the existing collection system piping capacity, which is subject to I/I. The wastewater collection system is considered generally adequate to serve the existing developed areas of the city²⁶. Wastewater service is currently not extended to the Rohnerville Airport or Alton areas. The city will need to develop a long-term solids handling plan for disposing of sewage sludge. The city's FY 07 – 08 five year CIP allocates \$10,476,000 for wastewater projects.

The North Fortuna Boulevard and the Main Street-Rohnerville Road intersection and Kenmar Road and Highway 101 South ramp intersection are operating below the 1993 General Plan LOS standard. The 2007 – 2008 CIP allocates \$4,222,000 for street projects, which includes: \$2,415,000 for street reconstruction and expansion projects.

Growth and Population Projections for the Affected Area

Based on Fortuna's historic annual growth of 1.6 percent, the city's 2030 population is projected to be 15,926.

In 2005, Fortuna's 4,729 housing units equate to 8.2 percent of overall county housing stock. At full build-out, Fortuna's 1993 General Plan would accommodate 5,020 housing units.

The city is currently updating the General Plan to plan for projected growth.

Financing Constraints and Opportunities

For the 2007 – 2008 Fiscal Year, the City of Fortuna's General Fund Budget had a projected ending unencumbered cash balance of \$4,593,844. The recurring and earned interest revenues were projected to be \$5,250,572 and the operational expenditures and debt service were budgeted at \$4,904,856, which corresponds to revenues exceeding expenditures by \$345,715 or approximately 7%. General Fund capital expenditures were budgeted at \$653,500.

The total Budget had a projected ending cash balance of \$12,504,612. The total capital expenditures are budgeted at \$3,675,500. Capital expenditures represent the City's continued reinvestment in to the improvement of the city's infrastructure.

Total revenues were projected to be \$12,538,633 and total expenditures were budgeted at \$13,562,145; which corresponds to total expenditures exceeding revenues by \$1,023,512 while the related Capital Improvement Projects have been and will be ongoing both in prior fiscal years as well as beyond 2007 – 2008.

Cost Avoidance Opportunities

The City Manager made some organization changes in the 2007 – 2008 FY for the purpose of increasing efficiencies and cost savings. The City Planner was promoted to Deputy Community Development Director and the City Manager continues to serve as the Department Head for the Community Development and Public Works Departments. The City of Fortuna does not have any duplication of services.

Rate Restructuring Opportunities

The City of Fortuna recently adopted Resolution 2006-30, which established water and sewer rate fees for fiscal years 2006/07 through 2010/11. The water and sewer fee increases will be used to fund the \$14 million upgrade to the wastewater treatment plant and critical replacement and improvements of water reservoirs and mains.

Shared Facility Opportunities

The city currently has a franchise agreement with Eel River Disposal to provide municipal solid waste collection within the city's boundaries. The City of Fortuna currently has an agreement to accept and treat Palmer Creek CSDs wastewater. The City of Fortuna has an MOU with the Humboldt County Library. The MOU transfers all library equipment owned by the city to the county. The county is responsible for maintenance, supplies and property insurance and equipment, but the city owns the library building and pays for building repairs and maintenance.

Government Structure Options

The City of Fortuna is currently updating its General Plan. The General Plan Update will guide development within the city through the year 2030.

Evaluation of Management Efficiencies

The Police Department anticipates that additional sworn staff, in addition to a new or expanded facility, will become necessary as growth continues. If adequate funding is not available to fill increased staffing needs, staffing shortages could prevent the Department from operating at maximum efficiency.

The Fire Departments all volunteer force may not be capable of meeting the demands of a growing and aging population; in order to operate at maximum efficiency, additional full-time administrative staff may be necessary.

The city actively promotes construction and demolition recycling. In addition, the city's contracted waste hauler provides single stream curbside recycling and greenwaste pickup on a bi-weekly basis. The city also promotes composting and provides composting bins to residents at a subsidized cost.

Local Accountability

The City Council, Design Review Board, Planning Commission, Historical Commission, Parks and Recreation Commission, and the Rohner Community Recreation and Park District agendas and meeting notes are posted on the City of Fortuna’s web site. The Comprehensive Annual Financial Report, the current fiscal year budget and the Annual Consumer Confidence Report and Newsletter are also available on the website. The web site contains a link to the General Plan Update website, which allows residents to read draft documents and post comments to a General Plan Blog. The web site also provides information pertaining to recycling programs, park and recreational programs, as well as the stormwater management plan. City employee contact information is also accessible via the web site.

¹ City of Fortuna. City of Fortuna 2007 – 2008 Fiscal Year Budget

² City of Fortuna website. www.sunnyfortuna.com November 20, 2007

³ 2000 Census. www.census.gov

⁴ Dyett & Bhatia. 2002. Humboldt 2025 General Plan Update. *Building Communities Report*.

⁵ City of Fortuna General Plan Update. *Background Report*. June 2007

⁶ *ibid*

⁷ *ibid*

⁸ City of Fortuna. 2007 Annual Consumer Confidence Report and Newsletter.

<http://gov.sunnyfortuna.com/newsletter/2007/ccr2006-07.pdf>. November 21, 2007

⁹ City of Fortuna 2007 – 2008 Fiscal Year Budget

¹⁰ *Ibid*.

¹¹ City of Fortuna Consumer Confidence Report 2007

¹² City of Fortuna 2007 – 2008 Fiscal Year Budget

¹³ City of Fortuna General Plan Update. *Background Report*. June 2007

¹⁴ *ibid*

¹⁵ *ibid*

¹⁶ *ibid*

¹⁷ City of Fortuna. City of Fortuna 2007 – 2008 Fiscal Year Budget

¹⁸ *ibid*.

¹⁹ *ibid*

²⁰ City of Fortuna. City of Fortuna 2006 – 2007 Fiscal Year Budget

²¹ City of Fortuna. City of Fortuna 2007 – 2008 Fiscal Year Budget

²² *ibid*

²³ Personal Communication with Sergeant Bill Dobberstein. November 21, 2007

²⁴ *ibid*

²⁵ City of Fortuna General Plan Update. *Draft PEIR*. November 2007.

²⁶ City of Fortuna General Plan Update. *Draft PEIR*. November 2007.