

Hydesville Water District

Municipal Service Review

January 2008

Prepared by:



For the District Sphere of Influence Report

TABLE OF CONTENTS

	<u>Page</u>
Local Agency Formation Commission Authority.....	1
Agency Profile.....	3
Growth and Population.....	3
Services.....	4
Other Service Providers.....	5
Financing Constraints and Opportunities.....	5
Service Rates.....	6
Local Accountability.....	6
Municipal Service Review Determinations.....	7

LOCAL AGENCY FORMATION COMMISSION AUTHORITY

Latent Powers, Enabling Legislation and Empowered Services

The fundamental role of the Local Agency Formation Commission (LAFCo) is to implement the Cortese-Knox-Hertzberg Act (The Act) consistent with local conditions and circumstances. The Act guides LAFCo's decisions. The major goals of LAFCo as established by The Act are to:

- Encourage orderly growth and development;
- Promote orderly development;
- Discourage urban sprawl;
- Preserve open-space and prime agricultural lands by guiding minimizing resource loss;
- Exercise its authority to ensure that affected populations receive efficient services;
- Promote logical formation and boundary modifications that direct the burdens and benefits of additional growth to those local agencies that are best suited to provide services;
- Make studies and obtain and furnish information which will contribute to the logical and reasonable development of local agencies to provide for present and future needs;
- Establish priorities by assessing and balancing community service needs with financial resources available to secure and provide Water and to encourage government structures that reflect local circumstances, conditions and financial resources;
- Determine whether new or existing agencies can feasibly provide needed services in a more efficient or accountable manner and, where deemed necessary,

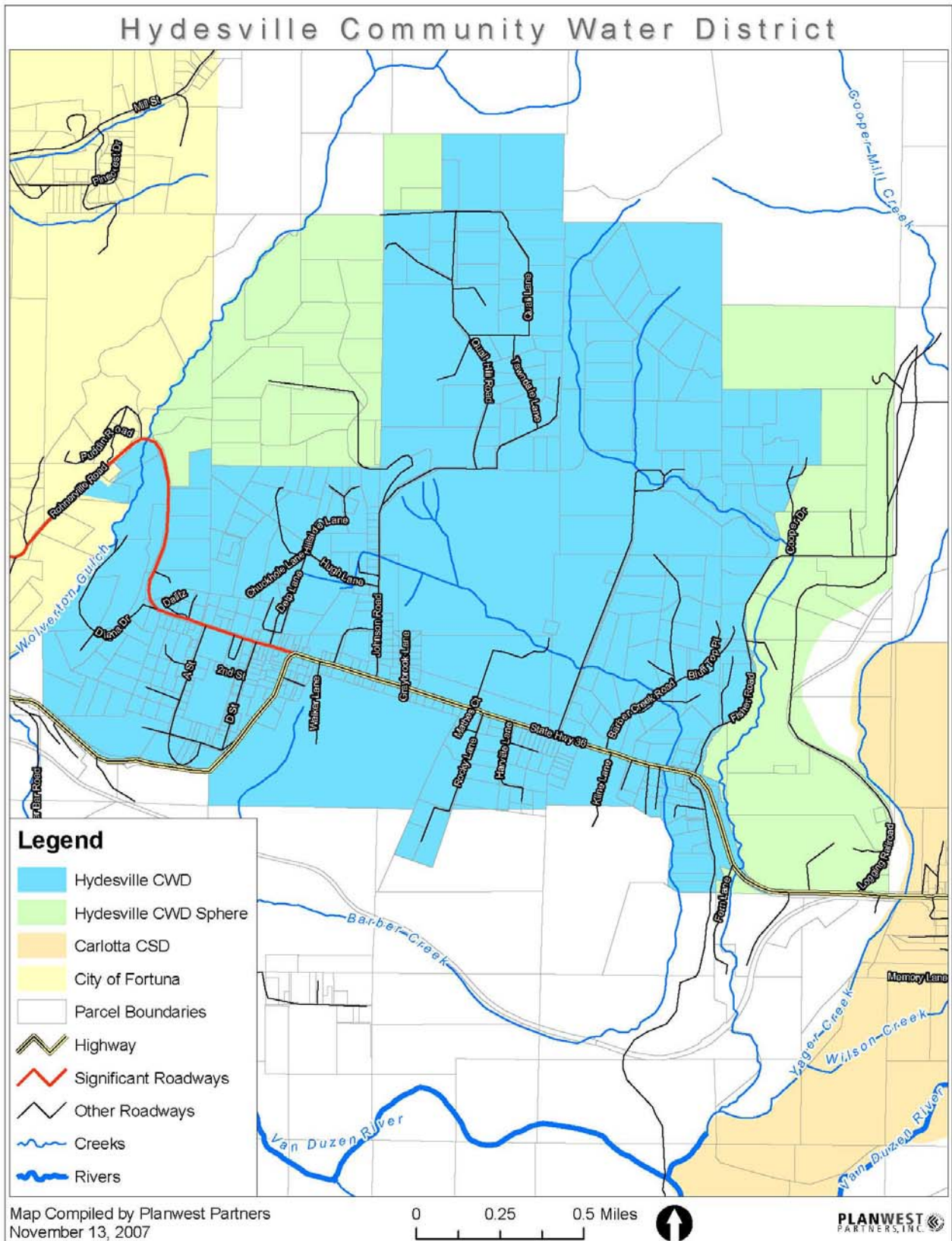
As set fourth in § 56425 (g) of The Act, on or before January 1, 2008, and every five years thereafter, Humboldt LAFCo shall review and update each Sphere of Influence (SOI).

Additionally, an MSR shall be conducted with, or in conjunction with the action to establish or to update a SOI pursuant to The Act. Together, the SOI and MSR documents analyze the District's ability to serve existing and future residents.

In order to prepare and to update Spheres of Influence in accordance with § 56425, Humboldt LAFCo shall conduct a service review of the municipal services provided in the Hydesville Water District (Water District). The commission shall include in the designated for service review area any other geographic area as is appropriate for an analysis of the services to be reviewed, and shall prepare a written statement of determinations with respect to the following:

- (1) Infrastructure needs or deficiencies;
- (2) Growth and population projections for the affected area;
- (3) Financing constraints and opportunities;
- (4) Cost avoidance opportunities;
- (5) Opportunities for rate restructuring;
- (6) Opportunities for shared facilities;
- (7) Government structure options;
- (8) Evaluation of management efficiencies; and
- (9) Local accountability and governance.

Figure 1. Hydesville Water District Map-District Boundary and Sphere of Influence



AGENCY PROFILE

The Hydesville County Water District (CWD) is located along Highway 36, southeast of the City of Fortuna, west of Cooper Mill Creek and east of Wolverton Gulch. The District consists of approximately 1932 acres (or three square miles).

Figure 1 (above) shows the district boundary, service boundary, and sphere of influence, as well as other service providers that are near the Hydesville CWD.

Formation

The Hydesville CWD was originally organized March 26, 1963 under Division 12 of the Water Code of the State of California and by Resolution 1861 of the Humboldt County Board of Supervisors. The five member governing board of the District is elected by the residents of the District to supervise the business of the District. The term of office of the board members is four years. The District was formed for the purpose of providing water services.

GROWTH AND POPULATION

County Population

According to the 2000 Census, the total population in Humboldt County was 126,518. California Department of Finance projections indicate an anticipated total compounded growth of 13.1 percent through the year 2025, which is lower than the 16.6 percent growth experienced in the past 20 years.¹ The Building Communities Report for the Humboldt County General Plan Update includes a complete discussion of County Population Trends.

District Population and Housing

It is estimated that the District currently provides water service to 450 connections and a population of approximately 1,200. The Community Infrastructure and Services Technical Report prepared for the Humboldt County General Plan Update analyzed a Hydesville Urban Study Area (USA) and Water Study Area (WSA). Although these areas combined encompass a larger area than the Hydesville CWD, the growth rates are similar. The County estimates there were 201 and 366 residential units within the Hydesville USA and WSA, respectively in 2005.² Based on the County's housing growth projections of between 0.5% and 2.5%, the Hydesville USA could have between 222 and 329 total residential units by 2025, while the Hydesville WSA could have between 404 and 600 total residential units by 2025. The high build-out estimates for total development potential within the USA and WSA, which takes into consideration physical and zoning constraints, are 755 and 612, respectively. The high build-out estimates for total development potential of 755 and 612 residential units represents a combined 800 new residential units within the Hydesville USA and WSA.³

Facility/ Services Plans or Similar Documents

Hydesville CWD had a Draft Municipal Services Review prepared in May 2003. In October 2007 a Draft Community Infrastructure and Services Technical Report was prepared for the Humboldt County General Plan Update. The Technical Report analyzed the Hydesville USA and WSA.

SERVICES

Presently, the District maintains and operates a water system only. It is estimated that the District currently provides water service to 450 connections, of which all are residential.

WATER

Infrastructure, Facilities and Services

Water Source and Treatment. The District's water supply is from two, twelve inch wells located on District owned land near Yager Creek. These wells are equipped with pumps which are rated at a total of approximately 360 gallons per minute (gpm). The water is chlorinated at the well site and then pumped to the District's two storage tanks. These storage tanks have a capacity of 200,000 and 400,000 gallons, which is estimated to be the equivalent of seven days of normal usage. Normal operating procedure for the District is to utilize one well while maintaining their second well in a reserve status, except during peak usage days (estimated to occur five to seven times per year). This is standard procedure which allows for sufficient reserve capacity in case of pump failure or other disruption in the operation of a well.

Water Demand. Average daily use for the entire District is estimated at approximately 100,000 gallons per day, and existing maximum day demands are estimated at 300,000 gallons per day. The system is operating at approximately 58% of source capacity. Therefore, there are approximately 326 available connections under the existing infrastructure.⁴ This increase in service connections could be accommodated by utilizing the District's reserve well. This additional growth in demand would probably necessitate the drilling of a third well in order to maintain sufficient reserve for peak usage and fire protection purposes.

Distribution System. The stored water is distributed by gravity, throughout the District's distribution system. The water supply is pumped to the 200,000 and 400,000 gallon storage tanks from which it is distributed, by gravity, to the District's customers. In order to maintain adequate pressure at the service connections, there needs to be approximately eighty feet of drop between the storage tank and the service connection. The distribution system consists of approximately 14 miles of 2-inch to 8-inch mains made of steel, AC, and PVC pipe.⁵

Infrastructure Deficiencies

The limiting factor with regard to expansion of the District's service area relates to the gravity fed distribution system. In some areas, located in the northern part of the District (Quail Hill subdivision area) the 4 inch mainline is inadequate in size to maintain the fire flow requirements and topography is a constraint on service area expansion utilizing the existing gravity fed system. Outside the District, but within the sphere of influence, Quiggle subdivision adjacent to the west side of the Quail Hill subdivision, has a topographic constraint. It has been determined that this subdivision needs a second pressure zone to provide adequate water flow and pressure.

Planned Improvements

The District recently completed a Water System Improvement Project which included the following upgrades:

- Seismic upgrade and painting of 200,000 gallon water storage tank.
- Addition of second line from well site to North Fisher Road replacing existing line through slippage area.
- Creating loops in distribution system from North Fisher Road to Creekside Place and from Chuckhole Road to Rohnerville Road.

The District is now planning the following improvements as funds become available:

- Increase size of distribution lines in the Quail Hill subdivision and Huey Lane.

Funding Sources for Improvements

With a lack of reserves in place, funding would likely have to come in the form of a rate increase.

Other Service Providers

The County of Humboldt provides general governmental services and law enforcement services throughout the territory of the District. The District is within a responsibility area for fire protection service from the Fortuna Fire Protection District and the California Department of Forestry and Fire Protection (Cal Fire). The Hydesville County Water District provides fire hydrants in all areas where water service is available within its boundaries.

FINANCING CONSTRAINTS AND OPPORTUNITIES

The District's water supply and distribution system was constructed with funds obtained through a Davis-Grunsky loan from the Department of Water Resources in fiscal year 1964-65. This loan was in the amount of \$182,500 with an interest rate of 3.1% per annum on the declining principal balance. Under the terms of the agreement with the state, the District is to repay this loan in 47 equal annual payments which began in 1970.

Budget

According to District records, they operate their water system on an annual budget of approximately \$212,000. Total wages and benefit expenses are approximately \$65,000. The District's income is entirely from service charges. See Table 1 for a summary of the District Budget including operating revenues and expenses.

Table 1. Hydesville County Water District Budget

	2006-2007 Actual	2007-2008 Budget
Total Income	\$182,094.49	\$224,863.00
Total Expenses	\$160,682.19	\$211,863.00
Net Income	\$21,412.30	\$13,000.00
Savings to General Reserve	\$0	\$13,000.00

SERVICE RATES

Rates for water service are established as follows:

MINIMUM MONTHLY CHARGE FOR WATER SERVICE

Meters serving one dwelling unit on a parcel..... \$30.00
Meters serving more than one dwelling unit on a parcel, including, but not limited to, multiple units, mobile homes or trailers in trailer parks, or elsewhere, and separate dwelling units in a single parcel..... \$30.00 per unit

In the event of bimonthly billing, the minimum charges shall be doubled and the quantity of water consumed shall be averaged. The minimum charges shall entitle the consumer to the amount of water, which can be purchased under the monthly quantity charges:

MONTHLY QUANTITY CHARGES (METERS)

Meters serving one dwelling unit on a parcel:
 First 750 cubic feet..... \$30.00 minimum charge
 Excess over 750 cubic feet..... \$ 3.00 per 100 cu. ft.
Meters serving more than one dwelling unit on a parcel:
 First 750 cubic feet..... \$30.00 minimum charge
 Excess over that quantity of cubic feet which equals the number of dwelling units times 750.....\$ 3.00 per 100 cu. ft.

The service rates are evaluated and adjusted as needed with Board approval.

LOCAL ACCOUNTABILITY

Contact Information

Hydesville County Water District	
Contact:	Cathleen West, Board Secretary
Mailing Address:	P.O. Box 561, Hydesville, CA 95547
Site Address:	3455 Hwy 36, Hydesville, CA
Phone Number:	(707) 768-3000
Email/ Website:	hydeswater@softcom.net
Types of Services:	Water
Population Served:	1,200
Size of Service Area (Acres):	1,932
Date of Formation:	March 26, 1963

The Board of Directors meets the second Tuesday of each month at the District office located at 3455 Hwy 36, Hydesville.

MUNICIPAL SERVICE REVIEW DETERMINATIONS

Growth and Population

With an estimated annual growth rate between 0.5% and 2.5%, the District could have up to 1,230 people by the year 2013 (five years). The County's high build-out estimate for the Hydesville area is 800 residential units.

Infrastructure

Currently the District provides water service to approximately 450 connections and the system is operating at approximately 58% of source capacity. Therefore, there are approximately 326 available connections under the existing infrastructure. The limiting factor with regard to expansion of the District's service area relates to the gravity fed distribution system. In some areas, located in the northern part of the District the 4 inch mainline is inadequate in size to maintain the fire flow requirements and topography is a constraint on service area expansion utilizing the existing gravity fed system. Currently, the District has adequate infrastructure to serve the existing population, as well as accommodate limited growth.

Financing Constraints and Opportunities

The District currently has adequate funding and infrastructure to meet the current water needs of District residents. The District is servicing two water system loans (one State and one Federal). The service rate fees cover current infrastructure, service and debt repayment costs.

Rate Restructuring

Considering the relatively low current debt load and operating expenses, the opportunities for rate restructuring are limited. Rates are adjusted as needed with Board approval.

Cost Avoidance Opportunities

Because of the District's small size, there are no significant cost avoidance opportunities available to the District for water service.

Opportunities for Shared Facilities

The Hydesville County Water District is located in-between the City of Fortuna and the community of Carlotta. Because of its location, there is potential to either combine services with the City, or to become a Community Services District (CSD) and expand services to include sewer services as well as expand the service area to include Carlotta.

Government Structure Options

The District could look into providing wastewater services to District residents as well as extending services to Carlotta.

Evaluation of Management Efficiencies

The District has a management program in place and is providing services to the District.

Local Accountability

The governing board of the District is the five member Board of Directors elected by District residents. District staff is available to the public via phone and email and Board meetings are open to the public.

¹ DYET T & BHATIA. 2002. Humboldt 2025 General Plan Update. Building Communities Report.

² Humboldt County General Plan Update. Community Infrastructure and Services Technical Report, Preliminary Draft, October 2007. <http://co.humboldt.ca.us/planning/gp/gpdemo/GPU-TOC-Demo3.htm#ch7>

³ Ibid

⁴ Ibid

⁵ Ibid